

Burlington County Municipal Joint Insurance Fund

MEL Loss Ratio Snapshot & File Summary

March 31, 2017

Pemberton Township



Burlington County Municipal Joint Insurance Fund

Six Year Cumulative MEL Loss Ratio Summary

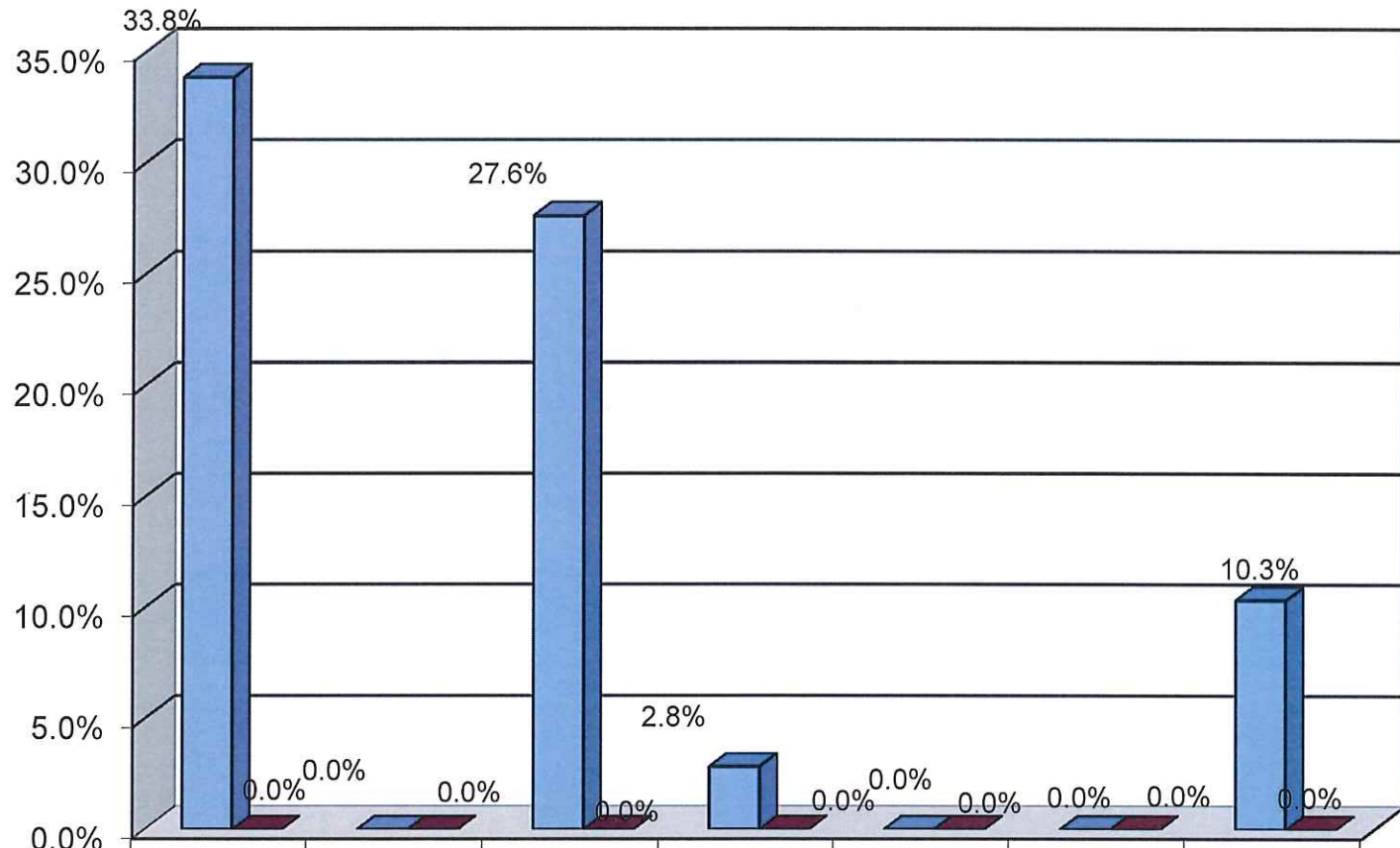
March 31, 2017

		2011	2012	2013	2014	2015	2016	TOTAL
BURLCO JIF	LOSS FUNDS	602,885	665,047	701,999	693,420	712,192	668,777	4,044,320
	CLAIMS INCURRED	203,975	-	193,838	19,561	-	-	417,373
	LOSS RATIO	33.8%	0.0%	27.6%	2.8%	0.0%	0.0%	10.3%

PEMBERTON TOWNSHIP	LOSS FUNDS	-	-	85,639	82,030	83,570	78,481	329,721
	CLAIMS INCURRED	-	-	-	-	-	-	-
	LOSS RATIO	0.0%	0.0%	0.0%	0.0%	0.0%	0.0%	0.0%

PLEASE NOTE: Claims Incurred includes any money that has been paid on the claim (expenses, medical, settlement, etc) and reserves established by the TPA to account for the anticipated ultimate cost of the claim (expenses, medical, settlement, etc.)

MEL LOSS RATIO SUMMARY - MARCH 31, 2017



■ BURLCO JIF	33.8%	0.0%	27.6%	2.8%	0.0%	0.0%	10.3%
■ Pemberton Township	0.0%	0.0%	0.0%	0.0%	0.0%	0.0%	0.0%

LOSS RATIO